

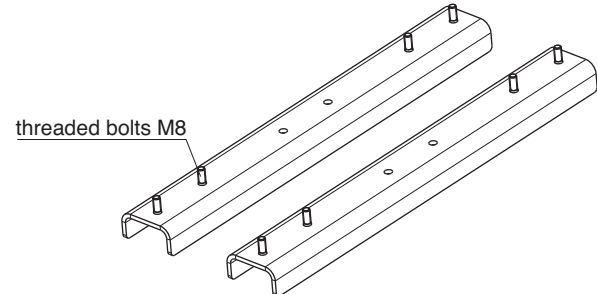
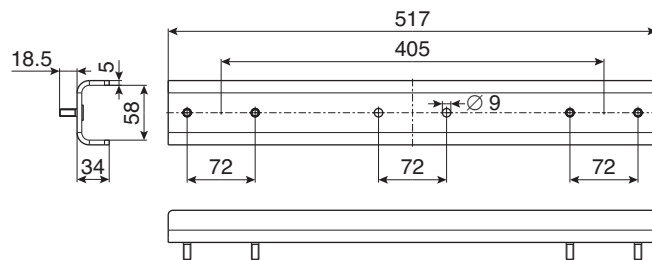
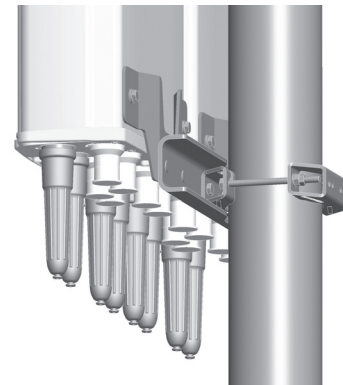
2 x Panel Mounting Kit

KATHREIN

Use this mounting kit for Panels with a maximum width of 377 mm.

Type No.	85010087
Contents	2 x brackets and mounting accessories
Material: – Clamp and screws – Nuts and washers	Hot-dip galvanized steel Stainless steel
Weight	Approx. 3.3 kg
Hole distance	72 mm
Windload category (Antenna)	"H"

Recommended torque for M8 bolted connections: 20 Nm



Configuration <u>without</u> mechanical downtilt	Configuration <u>with</u> mechanical downtilt

Mounting Accessories (order separately)

Clamps (only the listed clamps are allowed!)

Type No.	Description	Remarks	Weight approx.	Units per mounting kit
85010002	1 clamp	Mast: 110 – 220 mm diameter	2.7 kg	2
85010003	1 clamp	Mast: 210 – 380 mm diameter	4.8 kg	2
85010008	Downtilt kit		4.3 kg	2

The downtilt kit can not be used in combination with any offset (85010060 and 85010061).

Any previous data sheet issues have now become invalid.

All specifications are subject to change without notice.
The latest specifications are available at www.kathreinusa.com

936.4913/a Subject to alteration.